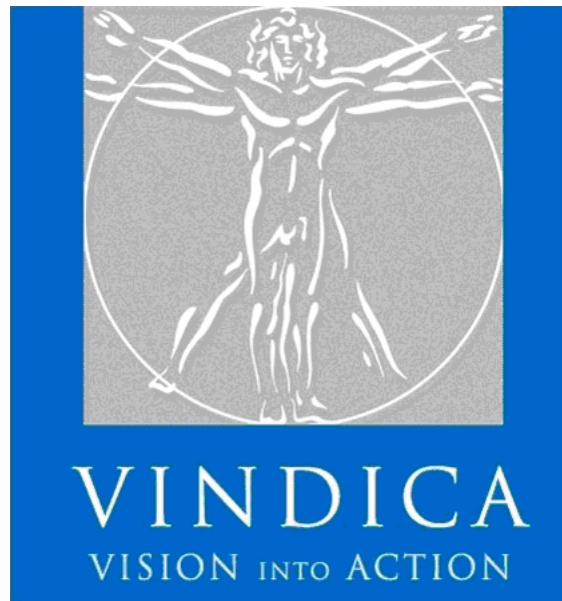


# Applicant Interview Guide



## Prepared for:

*John Doe*

Vindica Ltd.

[www.vindica.ie](http://www.vindica.ie)  
[askus@vindica.ie](mailto:askus@vindica.ie)

- *This material is confidential and personal.*
- *Please do not read this report unless authorized to do so.*
- *The content should not be used as the sole source for decisions regarding hiring, placement, career moves or termination.*

7/27/2006 5:20:00 AM  
980D\_9C7E

This entire document is subject to the following statement:

Copyright © 2001- 2006 – Axiometrics International, Inc. All rights reserved.

---

## ***Applicant Interview Guide*** **SUMMARY**

---

### **ATTITUDES:**

- Skeptical, resentful, angry attitude toward the world
- Optimistic about themselves
- Optimistic, positive attitude toward others
- Cautious, skeptical attitude toward getting things done

### **PROBLEM SOLVING:**

- Inventive, potentially creative practical thinking
- Good intuitive insights, 'gut instincts'
- Excellent, analytical, conceptual thinking and organizing
- Proactive thinking, focuses on consequences

### **SELF IMAGE:**

- Persistent
- No fear of failure, some fear of success
- Confident, goal oriented

### **MOTIVATORS:**

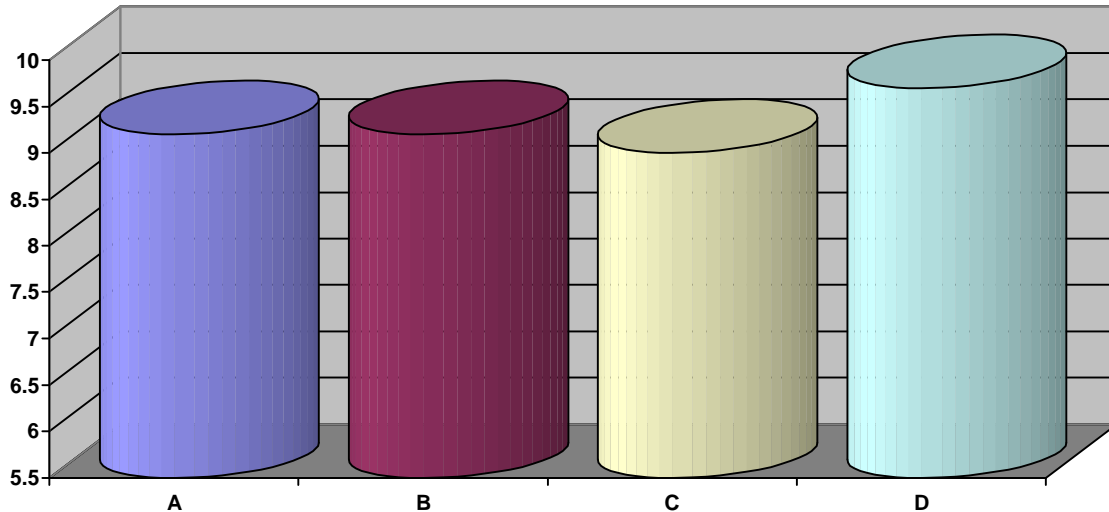
- Sense of mission, personal goals
- Sense of commitment to organization or team goals

### **STRESSORS:**

- Excellent stress resistance

## Applicant Interview Guide

### GLOBAL GRAPH



<b>Low Risk</b> (Excellent ability to utilize the capacity and translate the talent into decisions; reduces the potential for errors and mistakes)	<b>8.8 to 10.0</b>
<b>Situational Risk</b> (Very good ability to utilize the capacity especially in well defined areas; however, there are specific situations that can interfere with the translation into decisions)	<b>8.5 to 8.79</b>
<b>Conditional Risk</b> (Limited access to the capacity indicating actual conditions that will increase the potential for mistakes and errors and restrict the transfer into decisions)	<b>8.2 to 8.49</b>
<b>Real Risk</b> (Restricted access to the capacity indicating the ability is consistently unavailable and individuals are subject to mistakes and errors in judgment)	<b>6.0 to 8.19</b>

<b>A) Works With Others (Low Risk)</b> — This capacity measures the ability to see and appreciate the needs and interests of others and the ability to deal with others in a concerned but objective manner.
<b>B) Gets Things Done (Low Risk)</b> — This section measures the ability of an individual to focus energy on tasks and follow them to completion dealing with the stresses and strains without losing freedom of action.
<b>C) Knows What To Do (Low Risk)</b> — This capacity measures a person's ability to decide what issues are relevant and need attention including intuitive insights, practical, common sense and conceptual abilities.
<b>D) Job Related Attitudes (Low Risk)</b> — This capacity measures a person's general work ethic and work attitudes indicating ability and willingness to take direction and work within organizational standards.

---

## ***Applicant Interview Guide***

---

### **PRIORITIZED CORE STRENGTHS**

#### **Proactive, Conceptual Thinking: (Knowing What To Do) (WE-8B)-Excellent Potential**

A combination of focus and attention on conceptual, long range thinking creates awareness of consequences relating to actions.

#### **Attitude Toward Authority: (Job Related Attitudes) (WE-15A)-Excellent Potential**

Strong sense of doing things right builds a willingness to accept existing authority and accepted ways of doing things.

#### **Willing To Follow Directions: (Job Related Attitudes) (WE-14A)-Excellent Potential**

An appreciation for system and organization builds respect for and attention to following directions and policies.

#### **Persistence: (Ability to Get Things Done) (WE-10A)-Excellent Potential**

Strong personal commitment to stay on track and complete goals and tasks regardless of what happens.

#### **Attitude Toward Others: (Working With Others) (WE-2A)-Excellent Potential**

Positive, open attitude toward others generates genuine concern about the needs and interests of others

#### **Doing Things Right: (Job Related Attitudes) (WE-13B)-Excellent Potential**

The ability to focus on doing things right is couched in a tendency to covertly or overtly get around standards.

#### **Self Confidence: (Ability To Get Things Done) (WE-12C)-Excellent Potential**

Awareness of social and role image combined with anxiety and uncertainty about which role is best.

### **PRIORITIZED DEVELOPMENT COMMENTS**

#### **Consistency: (Ability To Get Things Done) (WEI-11A)-Real Risk**

Inconsistent feelings shifting from confidence and comfort to dissatisfaction can interfere with one's ability to act.

#### **Results Oriented: (Ability To Get Things Done) (WEI-9B)-Conditional Risk**

Lack of attention to results will lead to delays in decisions and can interfere with getting things done.

#### **Sensitivity To Others: (Working With Others) (WEI-4A)-Situational Risk**

Excessive sensitivity to what others think or say potentially making it hard to address difficult issues.

---

## ***Applicant Interview Guide*** **PRIORITIZED INTERVIEW NOTES**

---

### **Consistency: (Ability To Get Things Done) (WEI-11A)-Real Risk**

Be careful not to over sell and hype your organization and your job opening. These individuals are not certain about what they want to do. Paint both the benefits and the realities of what you expect from them.

### **Results Oriented: (Ability to Get Things Done) (WEI-9B)-Conditional Risk**

Place these individuals in a real time situation from your work environment to test their ability to see what needs to be done, to respond under pressure and get things done regardless of what is happening around them.

### **Sensitivity To Others: (Working With Others) (WEI-4A)-Situational Risk**

They are susceptible to opinions of others and may overlook inappropriate behavior on the part of people whom they feel close to. Test their ability to hold on to their beliefs and to respond consistently under pressure.